

# Curve

## DISPLAY

An experimental Didone — ss  
by Arne Freytag

n° 23 — 2025



# MYST

Curve Display is the related variant of Curve. It is a contemporary display font that combines the elegant classicism of the Didone tradition with experimental deconstruction. It has a large x-height and super-elliptical shapes that are deliberately broken, fragmented or mirrored. The result is a powerful tension between elegance, irritation and contemporary expression. Curve Display stands for strong visual statements that deliberately experiment with legibility and perception.

---



# Quirky

CREATURES

NOV̂ALIS—ſ 24

**nov̂a**

*Quirky and Lively Creatures*

**IRON & WIN̂**



— *ss* —  
**Water**  
**music**

GEORGE FRIEDRICH HÄNDEL

## LANGUAGE SUPPORT

SUPPORTS 34 LANGUAGES (PRO/OT CFF)

Āfrikaans, Basque, Breton, Catalan, Croatian, Czech, Danish, Dutch, English, Estonian, Finnish, French, Gaelic (Irish, Scots), German, Hungarian, Icelandic, Indonesian, Irish, Italian, Latvian, Lithuanian, Norwegian, Polish, Portuguese, Romanian, Saami (Southern), Serbian, Slovak, Slovenian, Spanish, Swahili, Swedish, Turkish.

q ì ç ð è Ě ĝ ĥ þ Ó  
ķ ł ŋ ø þ Ħ ř ŝ t ú w  
ž Ğ H đ Ĵ K Ǻ æ T t

---

Indian Summer

CURVE LIGHT

Seed Merchant

CURVE REGULAR

Young Fashion

CURVE BOLD

Mars Regions

CURVE EXTRA BOLD

Planetesima

CURVE ULTRA BOLD

Pocket Compass

CURVE LIGHT ITALIC

Characteristical

CURVE REGULAR ITALIC

Hippopotamus

CURVE BOLD ITALIC

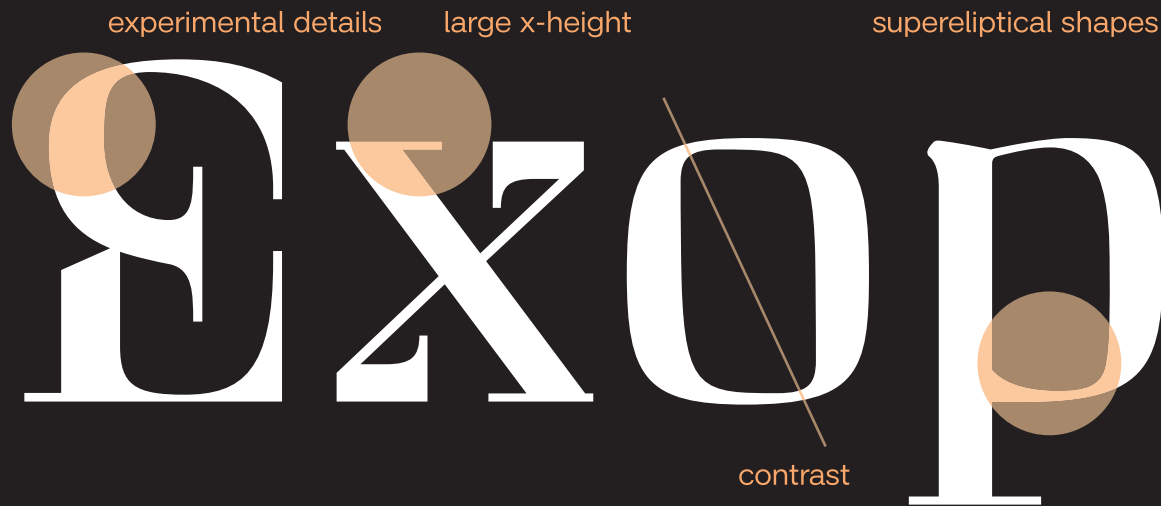
Juxtaponente

CURVE EXTRA BOLD ITALIC

Far Journeys

CURVE ULTRA BOLD ITALIC

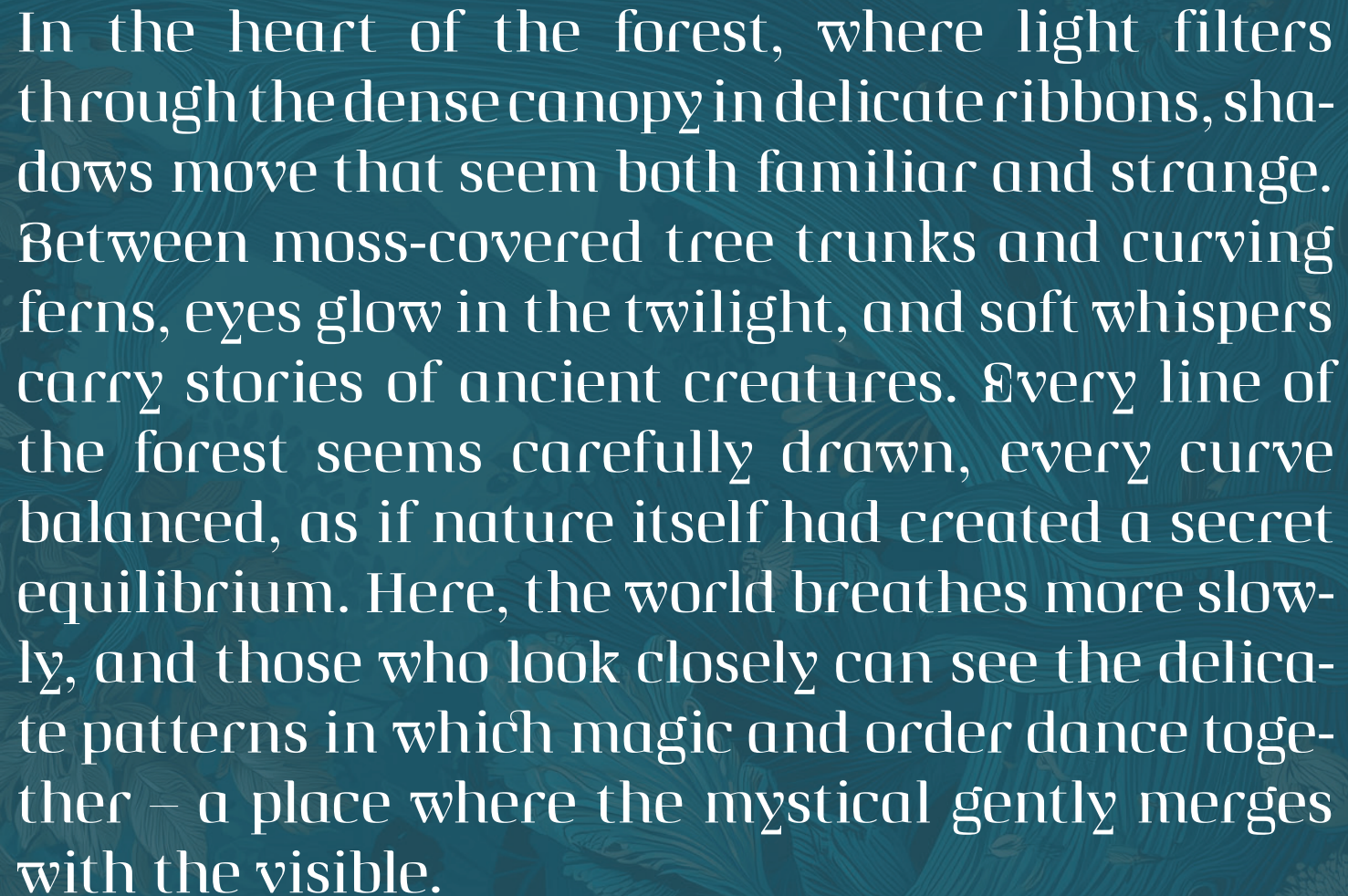
## DESIGN CONCEPT



ch ck ffi ffl fbffb fy



# Birth of a Galaxy



In the heart of the forest, where light filters through the dense canopy in delicate ribbons, shadows move that seem both familiar and strange. Between moss-covered tree trunks and curving ferns, eyes glow in the twilight, and soft whispers carry stories of ancient creatures. Every line of the forest seems carefully drawn, every curve balanced, as if nature itself had created a secret equilibrium. Here, the world breathes more slowly, and those who look closely can see the delicate patterns in which magic and order dance together – a place where the mystical gently merges with the visible.

# TRISTAN & YSEULT



