

TalarisTM

A softly blurred sans
by Arne Freytag

Nº 24 ~ 2026

Talaris presents itself as a softly blurred, subtly overlaid grotesque with flowing transitions and deliberately softened contours.

Formally, the typeface recalls the experimental digital culture of the 1990s and stands in clear proximity to Emigre and Fuse fonts, where imperfection was embraced as a deliberate design attitude.

In contrast to its historical predecessors, Talaris appears more controlled and systematic, guided by a clear typographic logic.

With 14 styles and support for 144 languages, the typeface offers a high degree of flexibility for a wide range of typographic applications.

Talaris bridges the spirit of the digital avant-garde of the 1990s with contemporary usability in editorial, branding, and conceptual design.



**Over
exposed**

POST MODERN DIGITAL

BLURRY

Starting from zero

FADED NINETIES

Gaußscher Weichzeichner

A close-up, artistic shot of a lava lamp. The lamp's interior is filled with a thick, translucent liquid that has formed into large, rounded, and elongated shapes. These shapes are a mix of vibrant colors: deep reds, bright oranges, sunny yellows, and cool blues and greens. The colors blend into each other, creating a rainbow-like effect. The lighting is soft, highlighting the glossy, almost glass-like texture of the liquid. The overall composition is abstract and visually appealing.

Lava

LAMP

LANGUAGE SUPPORT

SUPPORTS 34 LANGUAGES (PRO/OT CFF)

Afrikaans, Basque, Breton, Catalan, Croatian, Czech, Danish, Dutch, English, Estonian, Finnish, French, Gaelic (Irish, Scots), German, Hungarian, Icelandic, Indonesian, Irish, Italian, Latvian, Lithuanian, Norwegian, Polish, Portuguese, Romanian, Saami (Southern), Serbian, Slovak, Slovenian, Spanish, Swahili, Swedish, Turkish.

đ ì ç ð è Ě ğ ĥ þ Ö
ķ ł ŋ ø þ Ě ř ŝ ₣ ú w
ž Ġ H d' Ĵ K å æ ƒ t'



Doppel
verdampfer

Diffuse Outlines

TALARIS EXTRA LIGHT

Analogtextures

TALARIS LIGHT

Unschärfe Spur

TALARIS REGULAR

Soft Distorsion

TALARIS BOLD

Floating Forms

TALARIS EXTRA BOLD

Smoothsignals

TALARIS ULTRA BOLD

Digital Afterglow

TALARIS EXTRA LIGHT – OBLIQUE

Softenedletters

TALARIS LIGHT – OBLIQUE

Blurredmemory

TALARIS OBLIQUE

Weiche Kontour

TALARIS BOLD – OBLIQUE

Pixel Romances

TALARIS EXTRA BOLD – OBLIQUE

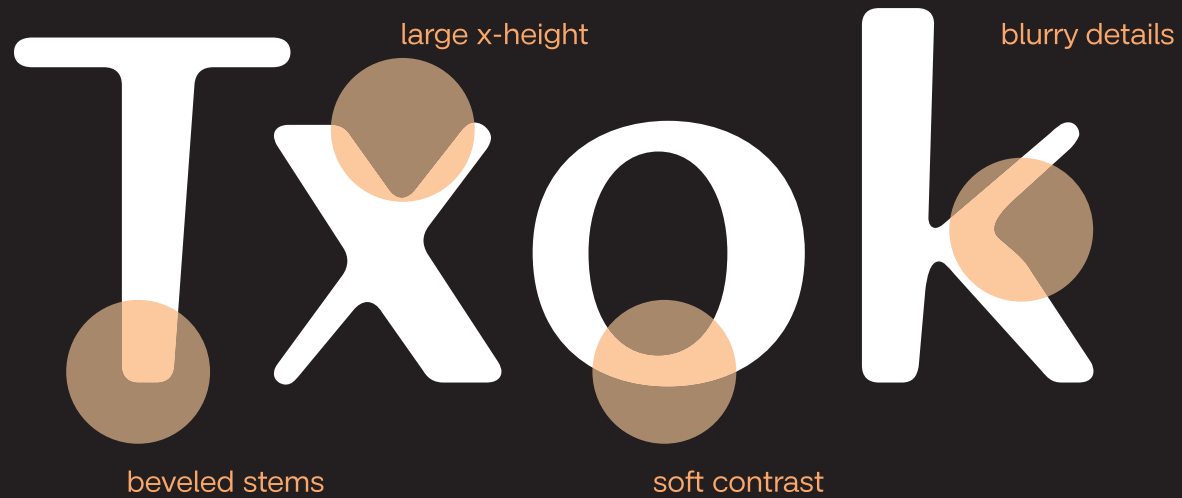
Vaguecontoure

TALARIS ULTRA BOLD – OBLIQUE



NEO
Organic

DESIGN CONCEPT



Character set

CAPITALS

ABCDEFGHIJKLMNOPQRSTUVWXYZ

LOWERCASE

abcdefghijklmnopqrstuvwxyz

SMALL CAPS

ABCDEFGHIJKLMNOPQRSTUVWXYZ

PUNCTUATION

*\·•∴,...!¡#.#?¿““;/_(){}[]— — —«»‹›„“”‘’,

LEGAL & REFERENCE

© ® ™ * † ‡ § ¶

MATH & CURRENCY

·√+-×÷=≠><≥≤±≈~¬∞∫ΩΔΠΣ√μδ%‰
 ªº°\$¢£¥€

PROPORTIONAL FIGURES

0123456789

TABULAR FIGURES

0 1 2 3 4 5 6 7 8 9

INFERIOR, DENOMINATOR, NUMERATOR, SUPERIOR

0123456789 0123456789 0123456789 0123456789

FRACTIONS

 $\frac{1}{2} \quad \frac{1}{4} \quad \frac{3}{4}$

ARROWS & POINTERS

↑ ↗ → ↘ ↓ ↙ ← ↖ ▲ ► ▼ ◄ “ ”

ADDITIONAL CAPITALS

ÆÐÐ#IJŁNØƆÐβƦK

ACCENTED CAPITALS

Á Â Ã Ä Å Æ Ç È É Ê Ë Ì Í Î Ï
 Ñ Ò Ó Ô Õ Ö × Ø Ù Ú Û Ü Ý Þ ß à
 â ã ä å æ ç è é ê ë ì í î ï ð

ADDITIONAL LOWERCASE

ædðħκ†ŋøæþβtκ

ACCENTED LOWERCASE

āăâãäąǎȁċčĉcđēėëèěēęğġgħîïĩıİįjī
ŷķļlʄłńňņñóőōõöörŗśřšşţťúûüũūų
űűwẀẂỳÿýźžż

STANDARD LIGATURES

6 A

DISCRETIONARY LIGATURES


ff

VHS

video

tracking distorsion

In the 90s, typography began to breathe. Edges softened, contours dissolved, and letters stepped back, as if they no longer wanted to explain everything. Blur and cross-fades allowed forms to drift into one another, turning type from something merely read into something quietly felt. In this ambiguous space, experimental fonts emerged that resisted clarity and preferred atmosphere over order. They carried digital noise, intentional imperfection, and the traces of a medium still finding its voice. Typography became a state of mind — fluid, unstable, and open to interpretation.



blur #MIX

A

SHOEGAZE

C-90

